

Quick Bayt[®]



For **FLY CONTROL**

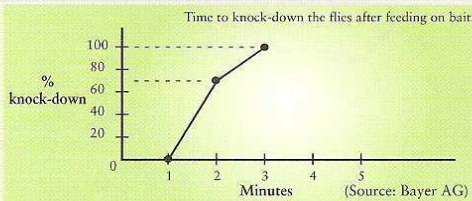
Bayer 

The Formulation

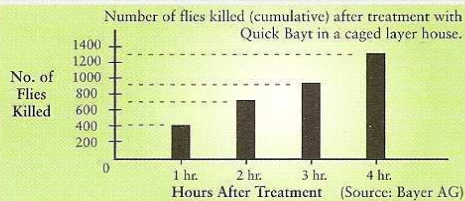
- * Active Ingredient: Imidacloprid.
- * Sugar-based granule.
- * Contains attractants.
- * Easy application as scatter bait or paint-on.

Outstanding Performance

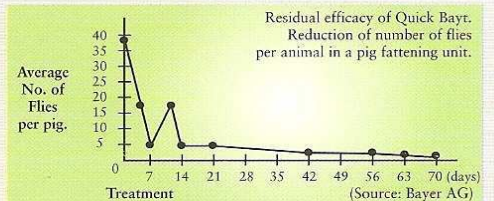
Fast knock-down



Quick action



Long lasting result



Application

* Scatter

Apply 2 grams of Quick Bayt per m² or linear meter. Spread evenly to avoid piling in tray.

* Paint-on

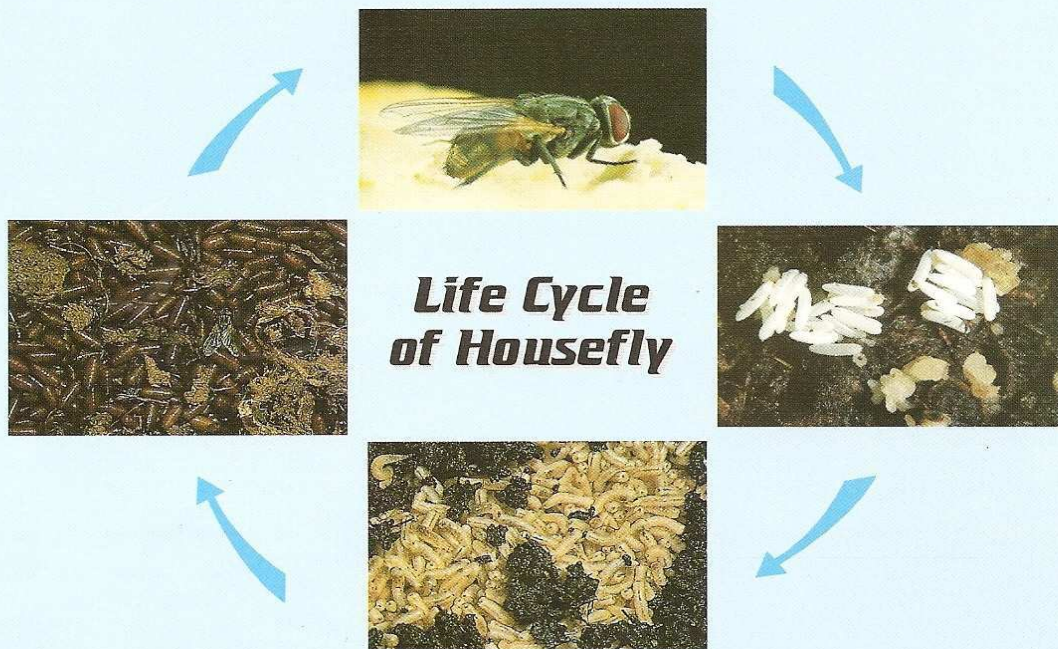
Stir 1 part of Quick Bayt with 0.8 parts of water by volume (preferably warm water) to make slurry. Paint-on with a brush to surfaces where flies usually rest. Strings can also be used by immersing it in the slurry and hang them near the flies harborage.

General Precautions

- * Keep out reach of children, pets or animals.
- * Strictly follow label instructions when handling the product.
- * Store only in it's original packaging.

Housefly General Facts

- * Live in close association with man.
- * Habits of visiting, feeding and breeding on filth.
- * Usually remains near breeding places.
- * At night, prefers to rest outdoors and under cover.



- * Life cycle undergoes complete metamorphosis stages of eggs, larva, pupa and adult.
- * In the tropics (around 30°C) life cycle takes 8–10 days.
- * Adult lays about 100–150 eggs per oviposition during lifetime.
- * Gravid females are attracted to decaying organic odors of breeding sites.

Why Control Flies?

- * **Unhygienic**
Flies contaminate feed and foodstuffs.
- * **Hazardous**
Flies transmit disease pathogens.
- * **Irritating**
Flies irritate man and animals.