



Suspend[®]
FLEXX

We make the products
you make
the difference

**WHAT YOU DO IS SO MUCH
MORE THAN CONTROLLING PESTS.**

It's about helping to create healthier spaces for your customers, where they live, work and play. That's why Bayer invests in the latest innovations, technical expertise and business-building tools for Pest Management Professionals. So, together, we can help people lead a better life. It's science, solutions and support at your fingertips. It's science for a better life.

For more information,
visit environmentalscience.bayer.sg



**The new
formulation**
Flexibility
you can
count on

**Introducing Suspend[®] Flexx -
affordable innovation for routine
maintenance applications on
complex surfaces.**

Bayer Co. (Malaysia) Sdn Bhd
25-03 & 25-04, Level 25, IMAZIUM,
No. 8, Jalan SS21/37 Damansara
Uptown, 47400 Petaling Jaya,
Selangor, Malaysia.



Solid Particle technology *from innovation to reality*

Suspend® Flexx is the first product to use a new **Solid Particle Formulation** technology, that gives pest management professionals a better option to control a broad spectrum of pest on any surface. Key benefits include:

- // Excellent performance even on **porous surfaces**.
- // Even distribution and more bioavailability of the active ingredient on applied surfaces up to **12 weeks***.
- // Enhanced efficacy and residuality compared to conventional Suspension Concentrate (SC) formulations.
- // Flexible application rates that make Suspend® Flexx a cost-effective solution for your pest control needs.

*May vary according to application rates, type of surface and environmental conditions

**Porous surfaces are everywhere
and represent a complex challenge
for pest management professionals.**



Textile



Carpets



Unpainted wood



Stucco



Bricks



Concrete



Porous surfaces

*are no longer
a legitimate excuse*

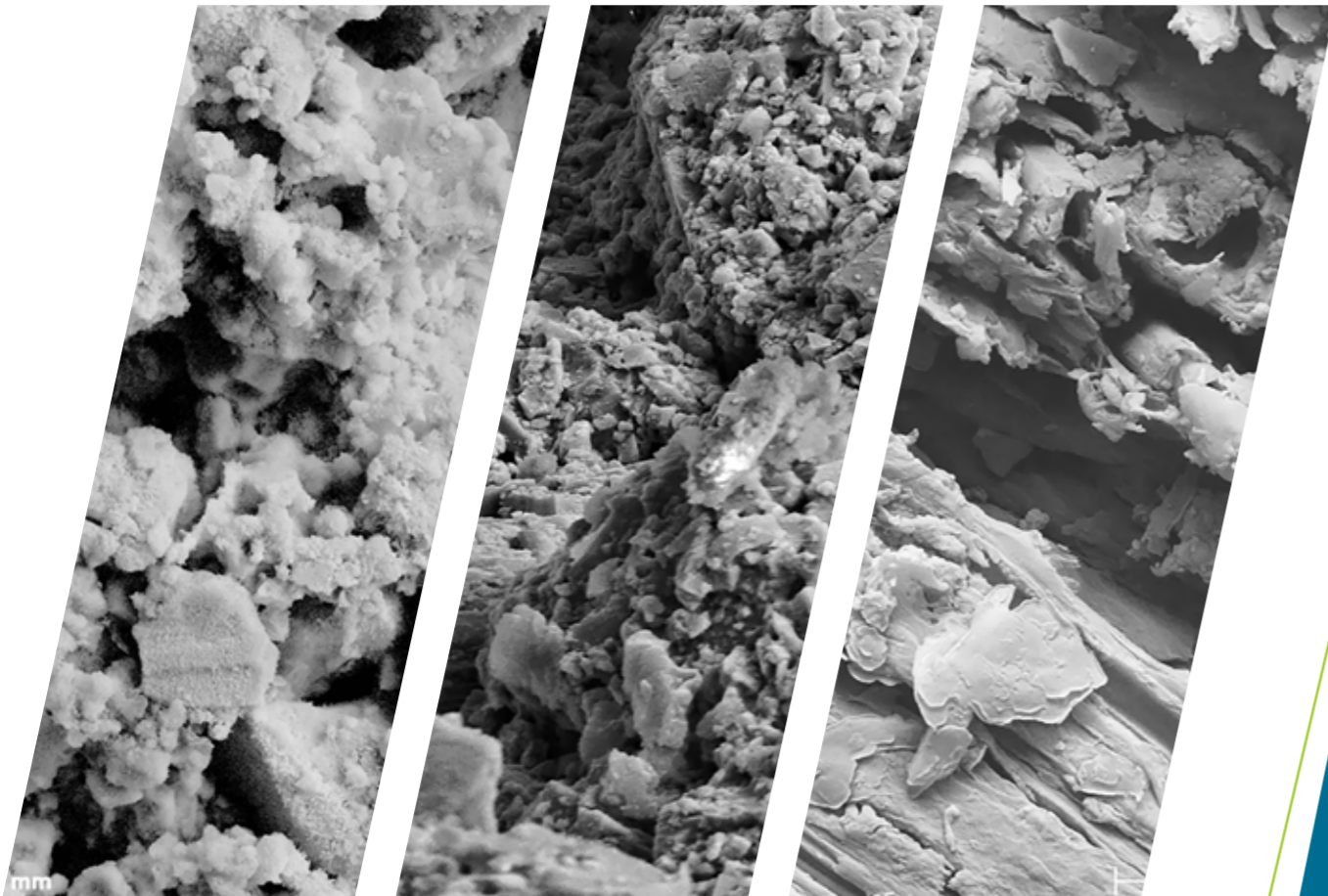
Porous surfaces such as unpainted wood, stucco, concrete or textile are found in almost every environment.

These surfaces are not truly smooth – take a closer look at 500x magnification.

Concrete

Stucco

Wood



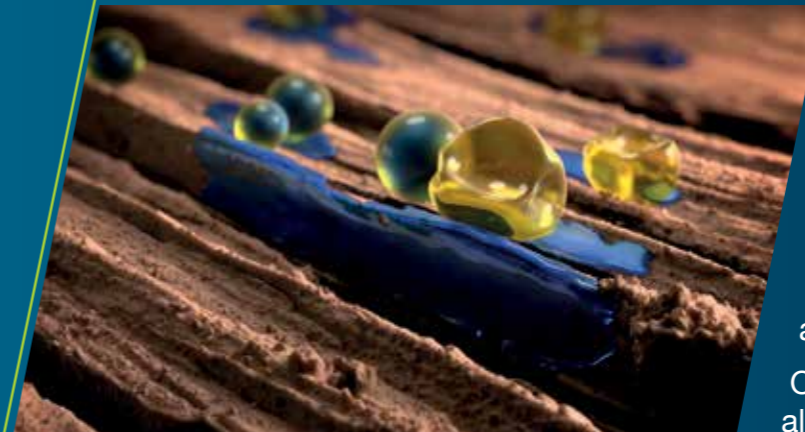
The current formulations fail to deliver good results on these surfaces due to the absorption and loss of the active ingredient into cracks.

Thanks to the new Solid Particle Formulation technology, the active ingredient is incorporated into 10x **larger particles** to prevent absorption and stay on top of surface.



Suspension Concentrate

Most of the AI falls into the cracks of the surface.



Microcapsulation

The AI still gets absorbed after released.
Oil-based formulations can also stain.



Solid Particles

The AI is incorporated into large, solid particles to stay on top.

Performance *taken further*

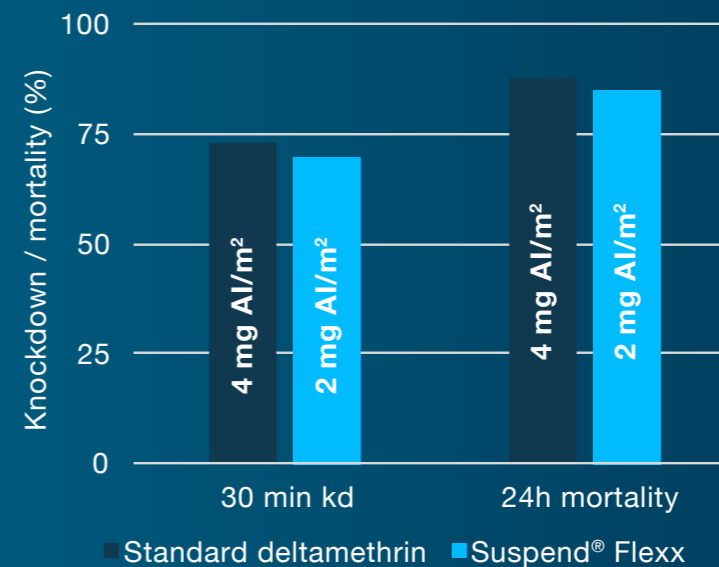
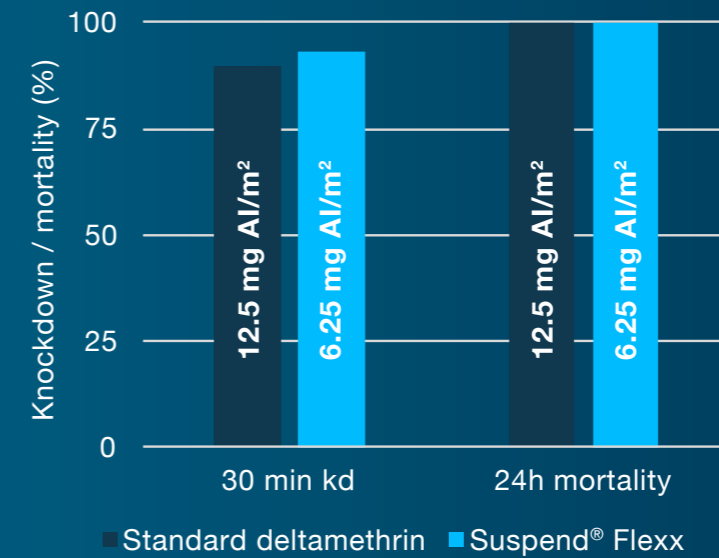
Due to advanced formulation technology, enhanced efficacy was achieved using 50% less active substance than conventional SC formulations, which means:

- // Significantly reduces active substance levels in the environment.
- // Less chemicals/solvents being used to treat pests (up to 5x).
- // Only half of the amount of active substance needed for usage in comparison to other insecticides.
- // More savings without compromising product efficacy.



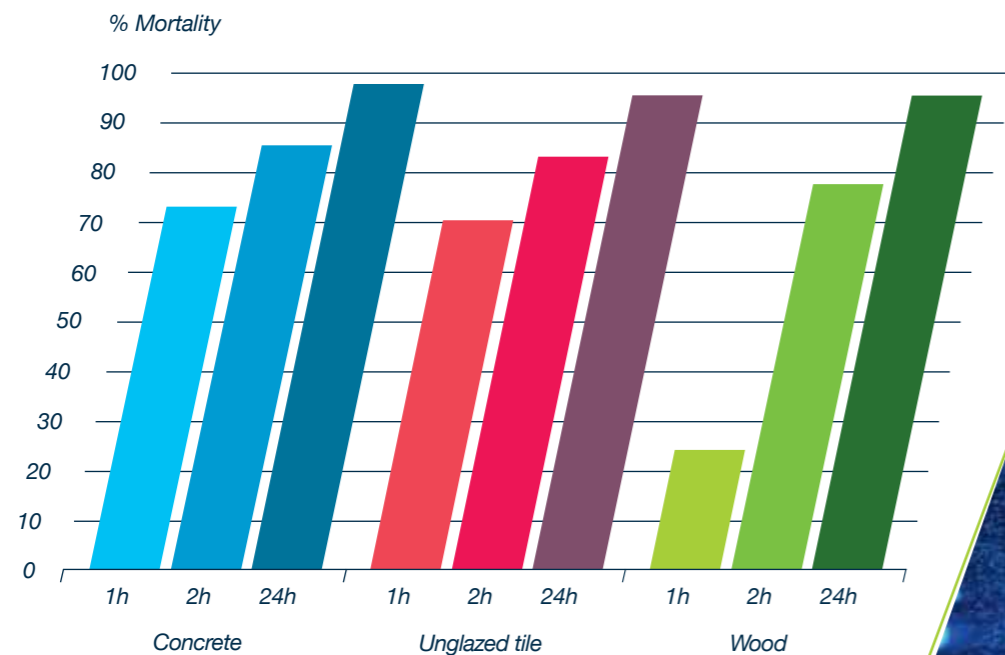
Suspend[®] Flexx *contributing to sustainability*

Comparison of standard deltamethrin vs Suspend[®] Flexx (summary of cockroach and ant data averaged across 3 surfaces – wood, concrete, tile)



Suspend[®] Flexx remains elevated to deliver superior results

Deltamethrin is the trusted active ingredient within Suspend[®] Flexx, known for its high efficacy on a broad spectrum of insect pests.



Data of Suspend Flexx after one month of aging on porous surfaces - summary of cockroach, houseflies and ant data.

Application rates and delivery

Flexible label, reducing cost
and chemical footprint:

- // **10 ml/L water (high rate):** Use this rate when under difficult conditions such as high pest pressure or aggressive surfaces.
- // **5 ml/L water (standard rate):** Use this rate for initial/cleanout control of cockroaches, ants and flies.
- // **2.5 ml/L water (maintenance rate):** For maintenance control after initial cleanout.



500 ml/bottle